

Great Falls Youth Orchestra

Trumpet Audition

1) SCALES

All scales must be slurred in eighth notes, quarter note = 104 minimum. Scales must be played ascending and descending, preferably 2 octaves.

1. Full Range Chromatic scale
2. Ab-Major and D-Major

2) ETUDE

From Arban's Complete Conservatory Method for Trumpet

11. 

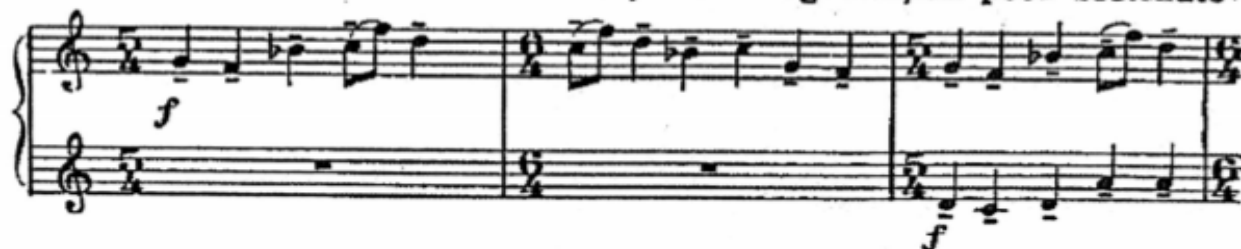
The musical score for Etude 11 is presented in four staves of music. The first staff begins with a tempo marking of quarter note = 124. The music is written in treble clef and consists of a series of eighth and sixteenth notes, with some measures containing slurs and accents. The key signature is one flat (B-flat major or D minor). The score is numbered 11.

3) EXCERPT

Mussorgsky: *Pictures at an Exhibition* (Promenade)

TROMBE I II
en Ut

Allegro guisto, nel modo russo; senza allegrezza, ma poco sostenuto.



4) SOLO EXCERPT

Play a 1 minute excerpt of a solo piece